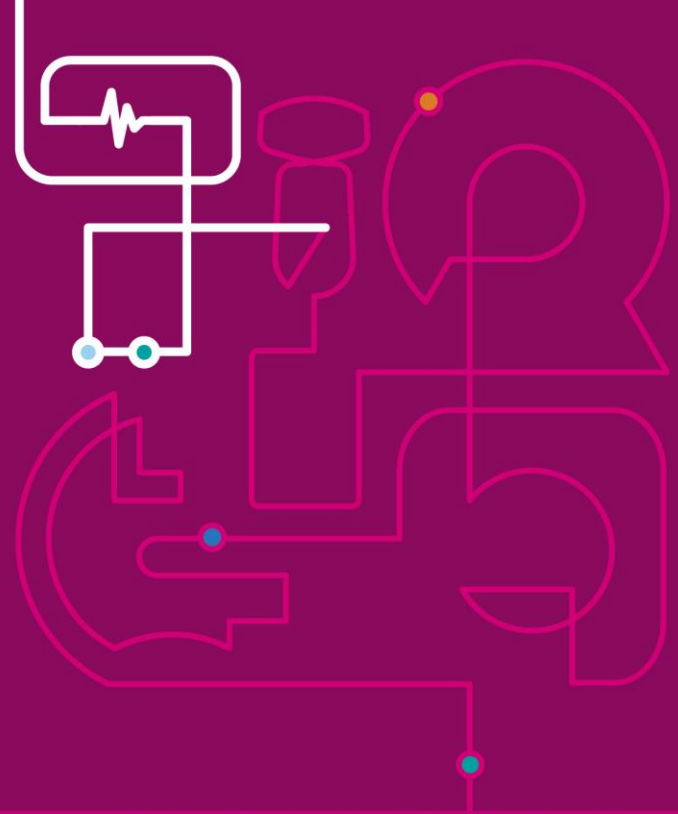


Intellivue & PIC iX Technical Training

Delivered at local Philips
training facility

Patient Monitoring | Technical Training



Synopsis

This 5 day in person course will enable service professionals to partner with Philips to provide frontline support. Participants will gain insight of the working principles and user possibilities within their Intellivue system. Additionally, skills will be developed to operate, configure, and troubleshoot system components.

- Hands-on, interactive training
- A focus on real-world system maintenance
- Extensive educational material and resources
- Engaging and dynamic classroom structure

Target audience

- Biomedical Engineers
- Technicians

Class capacity

The course supports a limited number of participants. Attendance is on a first come-first serve basis.

Course details

- Duration: 5-day course
- Instructor led training
- Cost: AUD \$4500 pp (excl GST)
- Delivered on a per person basis
- Timing and location subject to availability

Speaker

Paul Groot Obbink



Paul is our lead technical training specialist. With a long and extensive career in medical engineering he offers comprehensive trainings that tackle real-world system complications.

In Paul's 20 years with Philips, he has trained biomedical engineers and technicians from all over Australia and New Zealand in patient monitoring systems support.

He strives to empower his students to reach their full potential and excel their careers. He ensures that every training is interactive, fresh and catered to the students needs.

Course highlights

Attendees will:

- Become familiar with the operation, configuration and repair of Philips Intellivue Monitors and wireless patient worn devices
- Qualify for a Support software license
- Understand the design of wired and wireless monitoring infrastructure and troubleshoot problems in an enterprise system
- Be able to understand the topology and operation of a centralized monitoring system
- Develop skills to perform remedial practices on system components right through to full disaster recovery

What will you get?

- 3 Year Accreditation
- 3 Year InCentre Access